

DEPARTMENT OF THE ARMY TECHNICAL MANUAL

ORGANIZATIONAL, DIRECT SUPPORT, AND GENERAL SUPPORT  
MAINTENANCE REPAIR PARTS AND SPECIAL TOOLS LISTS  
FOR  
TELECOMMUNICATION STATION LS-147C/FI  
(NSN 5830-00-752-5357)

Headquarters, Department of the Army, Washington, DC  
27 May 1977

Current as of 12 November 1976

**REPORTING OF ERRORS**  
You can improve this manual by recommending improvements using DA Form 2028-2 (Test) located in the back of the manual. Simply tear out the self addressed form, fill it out as shown on the sample, fold it where shown, and drop it in the mail.  
If there are no blank DA Form 2028-2 (Test) in the back of your manual, use the standard DA Form 2028 (Recommended Changes to Publications and Blank Forms) and forward to the Commander, US Army Electronics Command ATTN: DRSEL-MA-Q Fort Monmouth, New Jersey 07702.  
In either case, a reply will be furnished direct to you.

Table of Contents

|   | Page | Illus<br>Figure |
|---|------|-----------------|
| SECTION I. INTRODUCTION .....                         |      |                 |
| II. REPAIR PARTS LIST .....                           | 5    |                 |
| Group 00. Intercommunication Set LS-147C/FI .....     | s    | 1               |
| 01. Cabinet, electrical equipment .....               | 7    | 2               |
| 02. Chassis electrical equipment .....                | 9    | 3               |
| Chassis assembly, top, exploded view .....            | 11   | 4               |
| SECTION III. Special tools list (Not applicable)      |      |                 |
| IV. National stock number and part number index ..... | 13   |                 |

\*

\*This manual supersedes TM 11-5830-221-24P, 28 June 1974.

## Section I. INTRODUCTION

### 1. Scope.

This manual lists repair parts for the performance of organizational and direct support maintenance of the LS-147C/FI.

### 2. General.

This Repair Parts and Special Tools List is divided into the following sections:

*a. Section II - Repair Parts List.* A list of repair parts authorized for use in performance of maintenance. The list also includes parts which must be removed for replacement of authorized parts. Parts lists are composed of functional groups in ascending numerical sequence, with the parts in each group listed in figure and item number sequence.

*b. Section III - Special Tools List.* Not applicable.

*c. Section IV - National Stock Number and Part Number Index.* A list, in ascending numerical sequence, of all National stock numbers appearing in the listings, followed by a list, in alphanumeric sequence, of all part numbers appearing in the listings. National stock numbers and part numbers are cross-referenced to each illustration figure and item number appearance.

### 3. Explanation of Columns.

The following provides an explanation of columns found in the tabular listings:

*a. Illustration.* This column is divided as follows:

(1) *Figure number.* Indicates the figure number of the illustration on which the item is shown.

(2) *Item number.* The number used to identify each item called out in the illustration.

*b. Source, Maintenance, and Recoverability Codes (SMR).*

(1) *Source code.* Source codes are assigned to support items to indicate the manner of acquiring support items for maintenance, repair, or overhaul of end items. Source codes are entered in the first and second positions of the Uniform SMR Code format as follows:

| <i>Code</i> | <i>Definition</i>  |
|-------------|--|
| AF          | Item to be assembled at direct support maintenance level.  |
| MD          | Item to be manufactured or fabricated at the depot maintenance level.  |
| PA          | Item procured and stocked for anticipated or known usage.  |
| PD          | Support item, excluding support equipment, procured for initial issue or outfitting and stocked only for subsequent or additional initial issues or outfittings. Not subject to automatic replenishment. |
| XA          | Item is not procured or stocked because the  |

requirements for the item will result in the replacement of the next higher assembly. —

**XB** — Item is not procured or stocked. If not available through salvage, requisition.

**XD** — A support item that is not stocked. When required, item will be procured through normal channels.

#### NOTE

Cannibalization or salvage may be used as a source of supply for any items source-coded above, except those coded XD and aircraft support items as restricted by AR 700-42.

(2) *Maintenance code.* Maintenance codes are assigned to indicate the levels of maintenance authorized to USE and REPAIR support items. The maintenance codes are entered in the third and fourth positions of the Uniform SMR Code format as follows:

(a) The maintenance code entered in the third position will indicate one of the following levels of maintenance.

| <i>Code</i> | <i>Application/Explanation</i> |
|-------------|--------------------------------|
|-------------|--------------------------------|

**O** — Support item is removed, replaced, used at the organizational level.

**F** — Support item is removed, replaced, used at the direct support level.

(b) The maintenance code entered in the fourth position indicates whether the item is to be repaired and identifies the lowest maintenance level with the capability to perform complete repair (i.e., all authorized maintenance functions). This position will contain one of the following maintenance codes.

| <i>Code</i> | <i>Application/Explanation</i> |
|-------------|--------------------------------|
|-------------|--------------------------------|

**F** — The lowest maintenance level capable of complete repair of the support item is the direct support level.

**Z** — Nonreparable. No repair is authorized.

(3) *Recoverability code.* Recoverability codes are assigned to support items to indicate the disposition action on unserviceable items. The recoverability code is entered in the fifth position of the Uniform SMR Code format as follows:

| <i>Recoverability Code</i> | <i>Definition</i> |
|----------------------------|-------------------|
|----------------------------|-------------------|

**F** — Repairable item. When uneconomically repairable, condemn and dispose at the direct support level.

**Z** — Nonreparable. When unserviceable, condemn and dispose at the level indicated in position 3.

*c. National Stock Number.* Indicates the National stock number assigned to the item that will be used for requisitioning purposes.

*d. Part Number.* Indicates the primary number used by the manufacturer (individual, company, firm, corporation, or Government activity), which controls the design and characteristics of the item by means of its engineering drawings, specifications standards, and inspection requirements, to identify an item or range of items.

NOTE

When a stock-numbered item is requisitioned, the repair part received may have a different part number than the part being replaced.

*e. Federal Supply Code for Manufacturer (FSCM).* The FSCM is a 5-digit numeric code listed in SB 708-42 which is used to identify the manufacturer, distributor, or Government agency, etc.

*f. Description.* Indicates the Federal item name and, if required, a minimum description to identify the item.

*g. Unit of Measure (U/M).* Indicates the standard of the basic quantity of the listed item as used in performing the actual maintenance function. This measure is expressed by a two-character alphabetical abbreviation (e.g., ea, in, pr, etc.). When the unit of measure differs from the unit of issue, the lowest unit of issue that will satisfy the required units of measure will be requisitioned.

*h. Quantity Incorporated in Unit.* Indicates the quantity of the item used in the breakout shown on the illustration figure, which is prepared for a functional group, subfunctional group, or an assembly.

#### 4. Special Information.

a. Detailed manufacturing instructions for items source-coded to be manufactured or fabricated are found in TM 11-5830-221-35.

b. Detailed assembly instructions for items source-coded to be assembled are found in TM 11-5830-221-35. Assembly components are listed immediately following the item to be assembled.

c. The following publications pertain to the LS-147C/FI and its components.

|                   | <i>Publication and Short Title</i>   |
|-------------------|--|
| TM 11-5830-221-12 | Intercommunication Stations LS-147A/FI, LS-147/FI, LS-147C/FI, and LS-147D/FI. |

#### *Publication and Short Title*

|                   |   |
|-------------------|---|
| TM 11-5830-221-35 | Intercommunication Stations LS-147A/FI, LS-147B/FI, LS-147C/FI, and LS-147D/FI. |
|-------------------|---|

*d. National Stock Numbers (NSN's)* that are missing from P source coded items have been applied for and will be added to this TM by future change/revision when they are entered in the Army Master Data File (AMDF). Until the NSN's are established and published, submit exception requisitions to: Commander, US Army Electronics Command, ATTN: DRSEL-MM, Fort Monmouth, New Jersey 07703 for the part required to support your equipment.

#### 5. How to Locate Repair Parts.

a. When National stock number or part number is unknown:

(1) *First.* Using the table of contents, determine the functional group within which the repair part belongs. This is necessary since illustrations are prepared for functional groups, and listings are divided into the same groups.

(2) *Second.* Find the illustration covering the functional group to which the repair part belongs.

(3) *Third.* Identify the repair part on the illustration and note the illustration figure and item number of the repair part.

(4) *Fourth.* Using the Repair Parts Listing, find the figure and item number noted on the illustration.

b. When National stock number or part number is known:

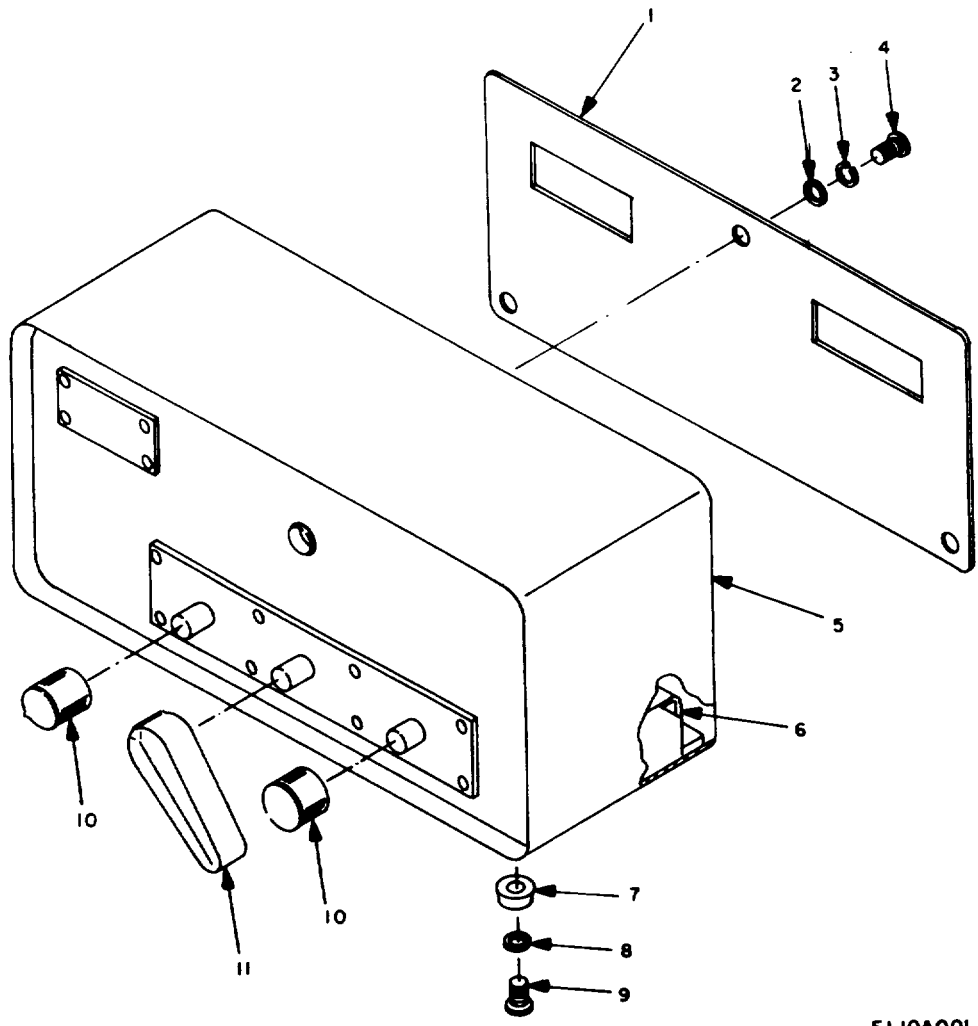
(1) *First.* Using the index of National Stock Numbers and Part Numbers, find the pertinent National stock number or part number. This index is in ascending NSN sequence, followed by a list of part numbers in ascending alphanumeric sequence, cross-referenced to the illustration figure and item number.

(2) *Second.* After finding the figure and item number, locate the figure and item number in the repair parts list.

#### 6. Abbreviations.

(Not applicable)

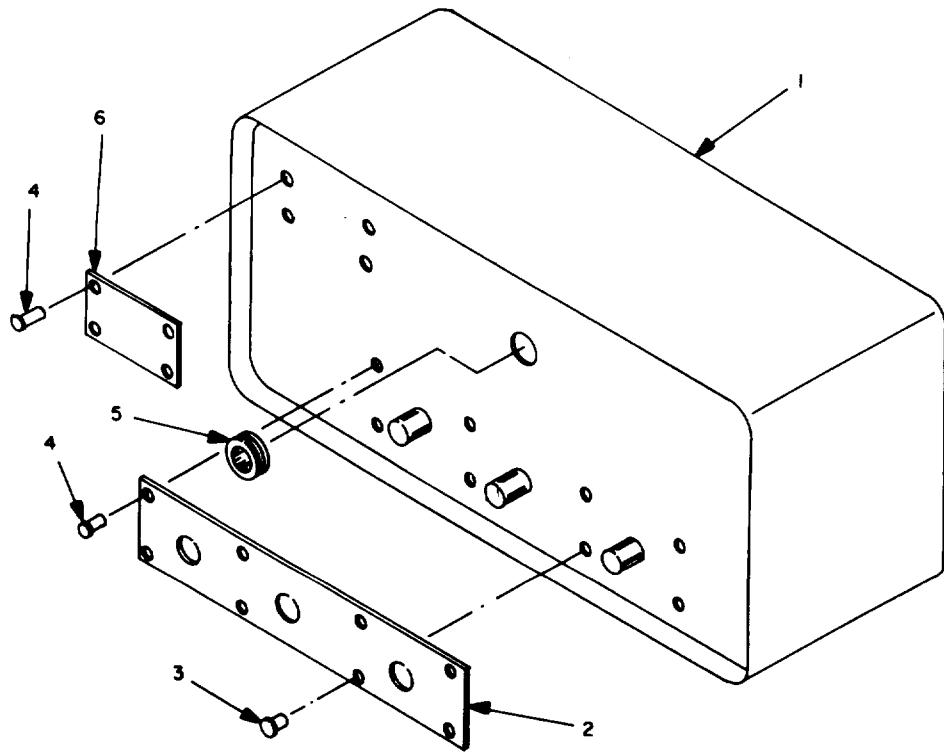
(Next printed page is 4)



EL10A001

Figure 1. Intercommunication Set LS-147C/FI.

| (1)<br>ILLUSTRATION<br>(A)<br>FIG<br>NO. | (2)<br>SMR<br>(B)<br>ITEM<br>NO. | (3)<br>NATIONAL<br>STOCK<br>NUMBER | (4)<br>PART<br>NUMBER | (5)<br>FSCM | TM11-5820-221-24P<br>DESCRIPTION       | USABLE ON<br>CODE | (7)<br>UNIT<br>OF<br>MEAS | (8)<br>QTY<br>INC<br>IN<br>UNIT |
|--|----------------------------------|------------------------------------|-----------------------|-------------|--|-------------------|---------------------------|---------------------------------|
| 1  | 1                                | XBFZZ                              | SM-C-542754           | 80063       | PLATE, REAR                            |                   | EA                        | 1                               |
| 1  | 2                                | PAFZZ                              | 5310-00-809-8544      | MS27183-7   | 96906                                  | WASHER, FLAT      | EA                        | 3                               |
| 1  | 3                                | PAFZZ                              | 5310-00-045-3299      | MS35338-42  | 96906                                  | WASHER, SPLIT     | EA                        | 3                               |
| 1  | 4                                | PAFZZ                              | 5305-00-558-7361      | MS35223-42  | 96906                                  | SCREW, MACHINE    | EA                        | 3                               |
| 1  | 5                                | XBFZZ                              | SM-D-542947           | 80063       | CABINET ASSEMBLY, ELECTRICAL EQUIPMENT |                   | EA                        | 1                               |
| 1  | 6                                | AFFFF                              | SM-D-542949           | 80063       | CHASSIS, ASSEMBLY                      |                   | EA                        | 1                               |
| 1  | 7                                | PAFZZ                              | 5340-00-062-6115      | 1343        | 70485                                  | BUMPER, RUBBER    | EA                        | 4                               |
| 1  | 8                                | PAFZZ                              | 5310-00-983-8483      | MS27183-5   | 96906                                  | WASHER, FLAT      | EA                        | 4                               |
| 1  | 9                                | PAFZZ                              | 5305-00-543-5763      | MS35223-31  | 96906                                  | SCREW, MACHINE    | EA                        | 4                               |
| 1  | 10                               | PAOZZ                              | 5355-00-584-5827      | 1470SPEC    | 72512                                  | KNOB              | EA                        | 2                               |
| 1  | 11                               | PAOZZ                              | 5355-00-160-6058      | 2100SPEC    | 72512                                  | KNOB              | EA                        | 1                               |



EL10A002

Figure 2. Cabinet, exploded view.

| (1)<br>ILLUSTRATION<br>(A)<br>FIG<br>NO. | (2)<br>SMR<br>(B)<br>ITEM<br>NO. | (3)<br>NATIONAL<br>STOCK<br>NUMBER | (4)<br>PART<br>NUMBER          | (5)<br>FSCM | TM11-5820-221-24P<br>DESCRIPTION | USABLE ON<br>CODE | (7)<br>UNIT<br>OF<br>MEAS | (8)<br>QTY<br>INC<br>IN<br>UNIT |
|--|----------------------------------|------------------------------------|--------------------------------|-------------|----------------------------------|-------------------|---------------------------|---------------------------------|
| 2  | 1                                | XBFZZ                              | SM-D-542946                    | 80063       | CABINET, ELECTRICAL EQUIPMENT    |                   | EA                        | 1                               |
| 2  | 2                                | MDFZZ                              | SM-C-542757                    | 80063       | PLATE, INSTRUCTION               |                   | EA                        | 1                               |
| 2  | 3                                | XDFZZ                              | SM-D-542947-2                  | 80063       | RIVET, SOLID                     |                   | EA                        | 12                              |
| 2  | 4                                | XDFZZ                              | SM-D-542947-1                  | 80063       | RIVET, SOLID                     |                   | EA                        | 10                              |
| 2  | 5                                | PAFZZ                              | 5325-00-276-6089<br>AN931-9-13 | 88044       | GROMMET, RUBBER                  |                   | EA                        | 1                               |
| 2  | 6                                | MDFZZ                              | SM-B-542574                    | 80063       | PLATE, IDENTIFICATION            |                   | EA                        | 1                               |

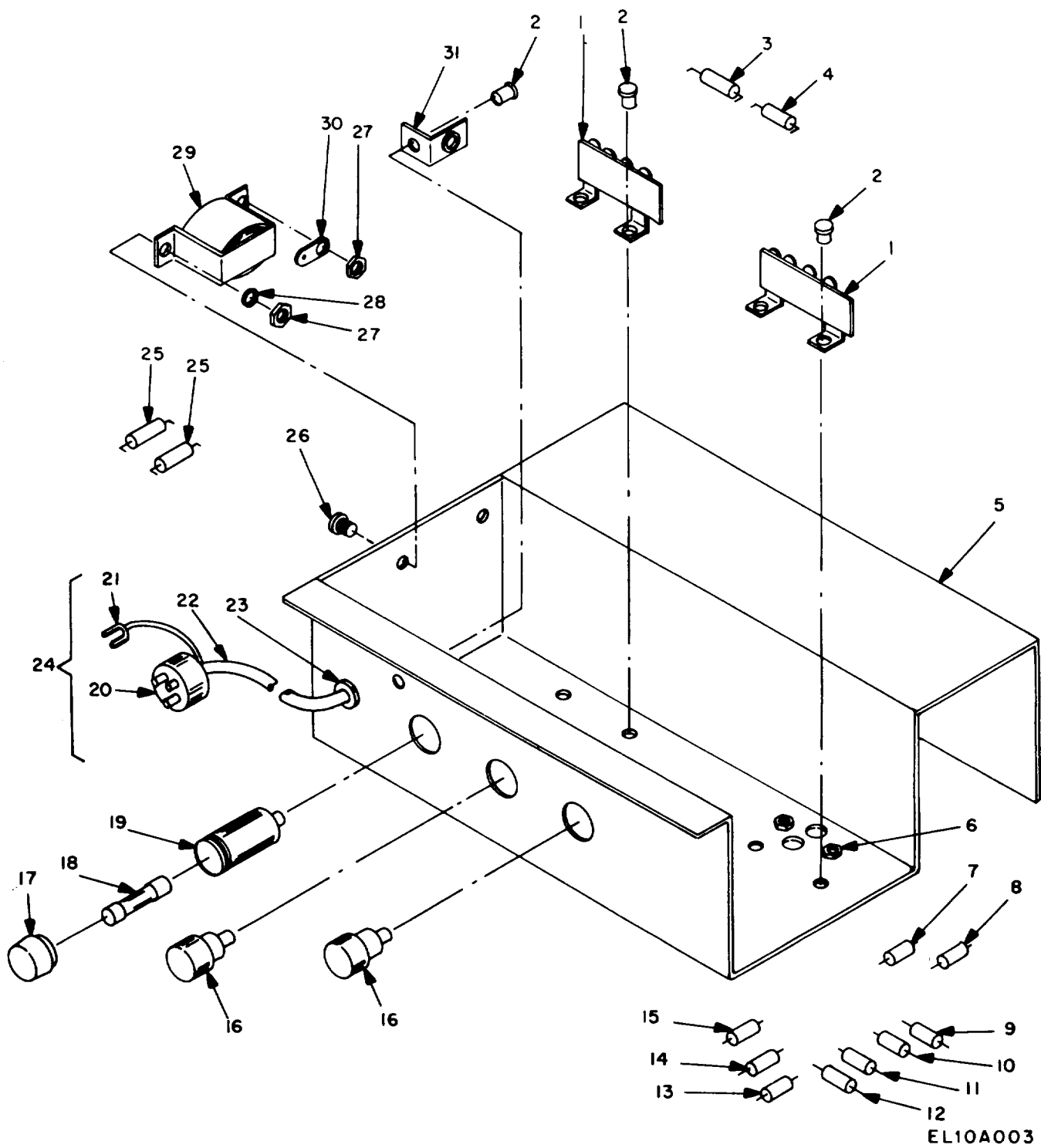


Figure 3. Chassis assembly, bottom, exploded view.



| (1)<br>ILLUSTRATION<br>(A)<br>FIG<br>NO. | (2)<br>SMR<br>(B)<br>ITEM<br>NO. | (3)<br>NATIONAL<br>STOCK<br>NUMBER | (4)<br>PART<br>NUMBER | (5)<br>FSCM  | TM11-5820-221-24P<br>DESCRIPTION | USABLE ON<br>CODE                           | (7)<br>UNIT<br>OF<br>MEAS | (8)<br>QTY<br>INC<br>IN<br>UNIT |
|--|----------------------------------|------------------------------------|-----------------------|--------------|----------------------------------|---|---------------------------|---------------------------------|
| 3  | 1                                | PAFZZ                              | 5940-00-685-9022      | 55C          | 71785                            | TERMINAL BOARD                              | EA                        | 2                               |
| 3  | 2                                | XDFZZ                              |                       | 508          | 90925                            | RIVET,SOLID                                 | EA                        | 7                               |
| 3  | 3                                | PAFZZ                              | 5905-00-254-7097      | RC20GF823K   | 81349                            | RESISTOR,FIXED,COMPOSITION                  | EA                        | 1                               |
| 3  | 4                                | PAFZZ                              | 5905-00-171-2002      | RC20GF470K   | 81349                            | RESISTOR,FIXED,COMPOSITION                  | EA                        | 1                               |
| 3  | 5                                | AFFFF                              |                       | SM-C-542753  | 80063                            | CHASSIS,ASSEMBLY,ELECTRICAL EQUIPMENT       | EA                        | 1                               |
| 3  | 6                                | PAFZZ                              | 5310-00-489-5009      | CL632-2      | 46384                            | NUT,BLIND,RIVET                             | EA                        | 4                               |
| 3  | 7                                | PAFZZ                              | 5910-00-799-8291      | CP05A1KF562K | 81349                            | CAPACITOR, FIXED, PAPER, DIELECTRIC         | EA                        | 1                               |
| 3  | 8                                | PAFZZ                              | 5910-00-799-8290      | CP95A1KE103K | 81349                            | CAPACITOR,FIXED, PAPER, DIELECTRIC          | EA                        | 1                               |
| 3  | 9                                | PAFZZ                              | 5905-00-185-6946      | RC20GF474K   | 81349                            | RESISTOR, FIXED, COMPOSITION                | EA                        | 1                               |
| 3  | 10                               | PAFZZ                              | 5905-00-185-6920      | RC20GF155K   | 81349                            | RESISTOR, FIXED, COMPOSITION                | EA                        | 1                               |
| 3  | 11                               | PAFZZ                              | 5905-00-279-1866      | RC20GF106K   | 81349                            | RESISTOR, FIXED, COMPOSITION                | EA                        | 1                               |
| 3  | 12                               | PAFZZ                              | 5910-00-799-8289      | CP05A1KE682K | 81349                            | CAPACITOR, FIXED, PAPER DIELECTRIC:         | EA                        | 1                               |
| 3  | 13                               | PAFZZ                              | 5910-00-822-8214      | CK60BX470K   | 81349                            | CAPACITOR, FIXED, CERAMIC DIELECTRIC        | EA                        | 1                               |
| 3  | 14                               | PAFZZ                              | 5905-00-549-7785      | RC32GF271K   | 81349                            | RESISTOR, FIXED, COMPOSITION                | EA                        | 1                               |
| 3  | 15                               | PAFZZ                              | 5910-00-644-3573      | CP05A1KB104K | 31349                            | CAPACITOR, FIXED, PAPER DIELECTRIC          | EA                        | 1                               |
| 3  | 16                               | PAFZZ                              | 5940-00-937-5237      | SC-DL-72389  | 80063                            | POST, BINDING                               | EA                        | 2                               |
| 3  | 17                               | XAFZZ                              |                       | 342012CAP    | 75915                            | CAP, FUSEHOLDER                             | EA                        | 1                               |
| 3  | 18                               | PAOZZ                              | 5920-00-280-8342      | F02A250V1A   | 31349                            | FUSE, CARTRIDGE                             | EA                        | 1                               |
| 3  | 19                               | PAFZZ                              | 5920-00-709-1149      | 342012       | 75915                            | FUSEHOLDER                                  | EA                        | 1                               |
| 3  | 20                               | PAFZZ                              | 5935-00-931-7490      | UP-221M      | 81349                            | CONNECTOR, PLUG, ELECTRICAL                 | EA                        | 1                               |
| 3  | 21                               | PAFZZ                              |                       | SM-B-542258  | 80063                            | TERMINAL LUG                                | EA                        | 1                               |
| 3  | 22                               | PAFZZ                              | 6145-00-299-4417      | P703A183     | 04946                            | CABLE, SPECIAL PURPOSE, ELECTRICAL          | EA                        | 1                               |
| 3  | 23                               | PAFZZ                              |                       | 6P1          | 28520                            | BUSHING, STRAIN RELIEF, CABLE               | EA                        | 1                               |
| 3  | 24                               | AFFFF                              |                       | SM-B-542570  | 80063                            | CABLE ASSEMBLY, SPECIAL PURPOSE, ELECTRICAL | EA                        | 1                               |
| 3  | 25                               | PAFZZ                              | 5910-00-783-8922      | CP05A1KE563K | 81349                            | CAPACITOR, FIXED PAPER DIELECTRIC           | EA                        | 2                               |
| 3  | 26                               | PAFZZ                              | 5305-00-208-9861      | MS35223-27   | 96906                            | SCREW, MACHINE                              | EA                        | 2                               |
| 3  | 27                               | PAFZZ                              | 5310-00-834-3156      | MS35649-62   | 96906                            | NUT, PLAIN, HEXAGON                         | EA                        | 2                               |
| 3  | 28                               | PAFZZ                              | 5310-00-045-4007      | MS35338-41   | 96906                            | WASHER, SPLIT                               | EA                        | 2                               |
| 3  | 29                               | PAFZZ                              | 5950-01-028-6694      | 51855        | 43543                            | TRANSFORMER, AUDIO FREQUENCY                | EA                        | 1                               |
| 3  | 30                               | PAFZZ                              | 5940-00-263-0243      | 635-6        | 79963                            | TERMINAL LUG                                | EA                        | 1                               |
| 3  | 31                               | PAFZZ                              | 5940-00-229-9644      | 52A          | 71785                            | TERMINAL BOARD                              | EA                        | 1                               |

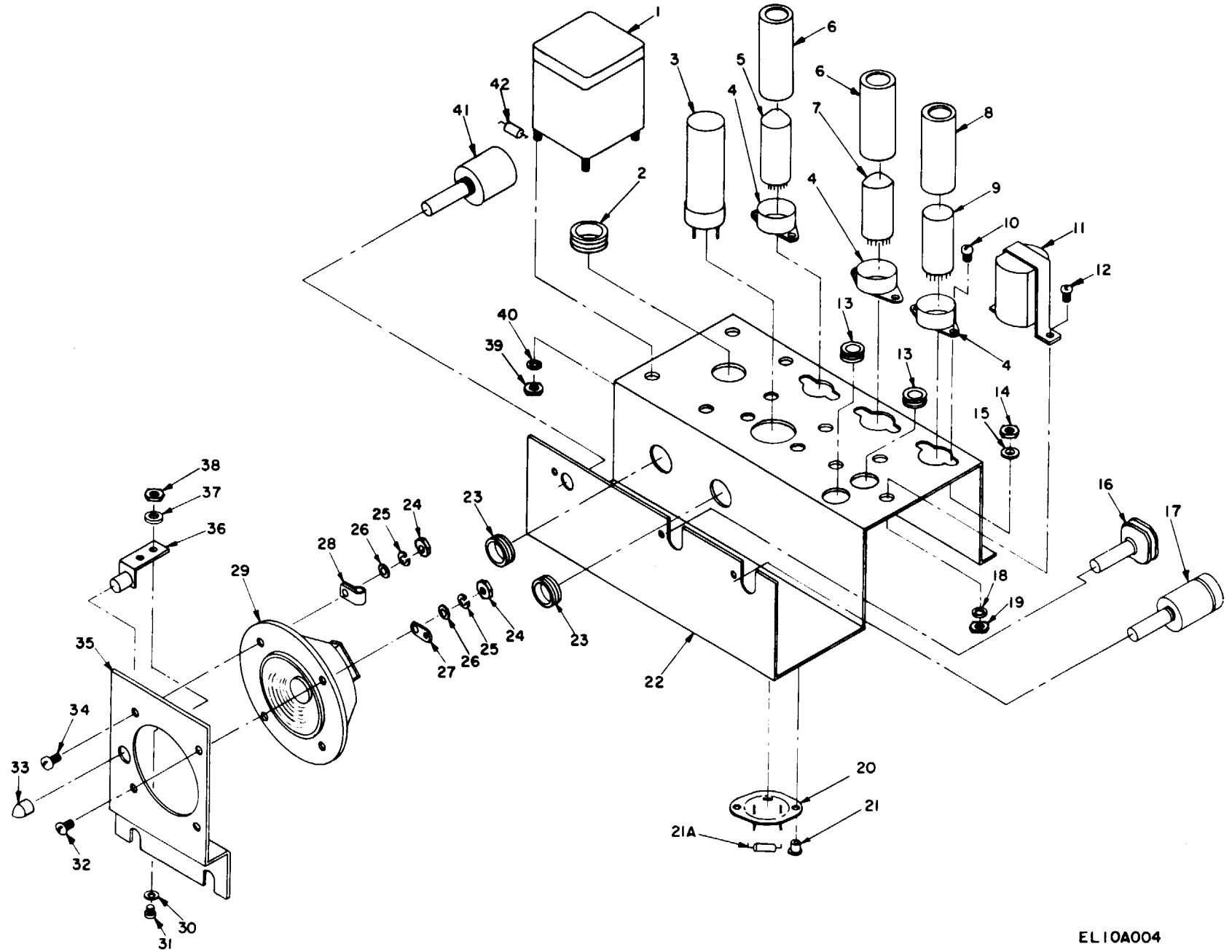


Figure 4. Chassis assembly, top, exploded view.

EL10A004

| (1)<br>ILLUSTRATION<br>(A)<br>FIG<br>NO. | (2)<br>SMR<br>(B)<br>ITEM<br>NO. | (3)<br>NATIONAL<br>STOCK<br>NUMBER | (4)<br>PART<br>NUMBER | (5)<br>FSCM | TM11-5820-221-24P<br>DESCRIPTION      | USABLE ON<br>CODE | (7)<br>UNIT<br>OF<br>MEAS | (8)<br>QTY<br>INC<br>IN<br>UNIT |
|--|----------------------------------|------------------------------------|-----------------------|-------------|---------------------------------------|-------------------|---------------------------|---------------------------------|
| 4  | 1                                | PAFZZ 5950-01-028-6664             | 51854                 | 43543       | TRANSFORMER, POWER, STEP-UP, STEPDOWN |                   | EA                        | 1                               |
| 4  | 2                                | PAFZZ 5325-00-263-6632             | AN931-4-7             | 88044       | CROMMET, RUBBER                       |                   | EA                        | 1                               |
| 4  | 3                                | PAFZZ 5910-00-823-1019             | 927-1707              | 72699       | CAPACITOR, FIXED, ELECTROLYTIC        |                   | EA                        | 1                               |
| 4  | 4                                | PAFZZ 5935-00-232-3758             | TS102C01              | 81349       | SOCKET, ELECTRON TUBE                 |                   | EA                        | 3                               |
| 4  | 5                                | PAOZZ 5960-00-166-7661             | 6X4WA                 | 81349       | ELECTRON TUBE                         |                   | EA                        | 1                               |
| 4  | 6                                | PAFZZ 5960-00-729-8150             | TS102U03              | 81349       | SHIELD, ELECTRON TUBE                 |                   | EA                        | 2                               |
| 4  | 7                                | PAFZZ 5960-00-134-6073             | 6005W                 | 81349       | ELECTRON TUBE                         |                   | EA                        | 1                               |
| 4  | 8                                | PAFZZ                              | TS102U02              | 81349       | SHIELD, ELECTRON TUBE                 |                   | EA                        | 1                               |
| 4  | 9                                | PAFZZ 5960-00-179-3710             | 6AU6WC                | 81349       | ELECTRON TUBE                         |                   | EA                        | 1                               |
| 4  | 10                               | PAFZZ 5305-00-405-8960             | MS35223-13            | 96906       | SCREW, MACHINE                        |                   | EA                        | 6                               |
| 4  | 11                               | PAFZZ 5950-01-028-6693             | 51856                 | 43543       | TRANSFORMER, AUDIO FREQUENCY          |                   | EA                        | 1                               |
| 4  | 12                               | PAFZZ 5305-00-208-9861             | MS35223-27            | 96906       | SCREW, MACHINE                        |                   | EA                        | 2                               |
| 4  | 13                               | PAFZZ 5325-00-174-5317             | MS35489-4             | 96906       | GROMMET, RUBBER                       |                   | EA                        | 2                               |
| 4  | 14                               | PAFZZ 5310-00-722-5284             | MS35649-42            | 96906       | NUT, PLAIN, HEXAGON                   |                   | EA                        | 6                               |
| 4  | 15                               | PAFZZ 5310-00-543-2410             | MS35338-40            | 96906       | WASHER, SPLIT                         |                   | EA                        | 6                               |
| 4  | 16                               | PAFZZ 5930-00-146-1300             | SM-B-542772           | 80063       | SWITECH, ROTARY                       |                   | EA                        | 1                               |
| 4  | 17                               | PAFZZ 5905-00-752-6708             | SM-B-542773           | 80063       | RESISTOR, VARIABLE                    |                   | EA                        | 1                               |
| 4  | 18                               | PAFZZ 5310-00-045-4007             | MS35338-41            | 96906       | WASHER SPLIT                          |                   | EA                        | 2                               |
| 4  | 19                               | PAFZZ 5310-00-834-3156             | MS35649-62            | 96906       | NUT, PLAIN, HEXAGON                   |                   | EA                        | 2                               |
| 4  | 20                               | XDFZZ                              | MP4                   | 90201       | SOCKET, CAPACITOR                     |                   | EA                        | 1                               |
| 4  | 21                               | XDFZZ                              | 508                   | 90925       | RIVET,SOLID                           |                   | EA                        | 2                               |
| 4  | 21A                              | PAFZZ 5905-00-195-5514             | RC20GF152K            | 81349       | RESISTOR, FIXED, COMPOSITION          |                   | EA                        | 1                               |
| 4  | 22                               | XBFZZ                              | SM-D-542948           | 80063       | CHASSIS, ELECTRICAL EQUIPMENT         |                   | EA                        | 1                               |
| 4  | 23                               | PAFZZ 5325-00-291-9366             | AN931-6-10            | 88044       | GROMMET, RUBBER                       |                   | EA                        | 2                               |
| 4  | 24                               | PAFZZ 5310-00-834-3156             | MS35649-62            | 96906       | NUT, PLAIN HEXAGON                    |                   | EA                        | 4                               |
| 4  | 25                               | PAFZZ 5310-00-045-4007             | MS35338-41            | 96906       | WASHER, SPLIT                         |                   | EA                        | 3                               |
| 4  | 26                               | PAFZZ 5310-00-982-6796             | MS27183-6             | 96906       | WASHER, FLAT                          |                   | EA                        | 3                               |
| 4  | 27                               | PAFZZ 5940-01-027-4667             | 635-8                 | 79963       | TERMINAL LUG                          |                   | EA                        | 1                               |
| 4  | 28                               | PAFZZ 5340-00-257-0038             | E2                    | 06915       | CLAMP, LOOP                           |                   | EA                        | 1                               |
| 4  | 29                               | PAFZZ 5965-00-752-5764             | S8925                 | 07109       | LOUDSPEAKER, PERMANENT MAGNET         |                   | EA                        | 1                               |
| 4  | 30                               | PAFZZ 5310-00-950-1310             | MS27183-4             | 96906       | WASHER, FLAT                          |                   | EA                        | 2                               |
| 4  | 31                               | PAFZZ 5305-00-558-4889             | MS35223-14            | 96906       | SCREW, MACHINE                        |                   | EA                        | 2                               |
| 4  | 32                               | PAFZZ 5305-00-068-6529             | MS35223-28            | 96906       | SCREW MACHINE                         |                   | EA                        | 3                               |
| 4  | 33                               | PAFZZ 6240-00-179-1814             | NE45                  | 81349       | LAMP, GLOW                            |                   | EA                        | 1                               |
| 4  | 34                               | PAFZZ 5305-00-068-6533             | MS35223-29            | 96906       | SCREW, MACHINE                        |                   | EA                        | 1                               |
| 4  | 35                               | XBFZZ                              | SM-B-542562           | 80063       | PLATE, MOUNTING                       |                   | EA                        | 1                               |
| 4  | 36                               | PAFZZ 6250-01-028-0351             | 4-74-12               | 95263       | LAMPHOLDER                            |                   | EA                        | 1                               |
| 4  | 37                               | PAFZZ 5310-00-543-2410             | MS35338-40            | 96906       | WASHER, SPLIT                         |                   | EA                        | 2                               |
| 4  | 38                               | PAFZZ 5310-00-722-5284             | MS35649-42            | 96906       | NUT, PLAIN, HEXAGON                   |                   | EA                        | 2                               |
| 4  | 39                               | PAFZZ 5310-00-836-4476             | MS35649-82            | 96906       | NUT, PLAIN, HEXAGON                   |                   | EA                        | 4                               |
| 4  | 40                               | PAFZZ 5310-00-045-3299             | MS35338-42            | 96906       | WASHER, SPLIT                         |                   | EA                        | 4                               |
| 4  | 41                               | PAFZZ 5905-00-752-6702             | SM-B-542774           | 80063       | RESISTOR, VARIABLE                    |                   | EA                        | 1                               |
| 4  | 42                               | PAFZZ 5905-00-171-2005             | RC20GF471K            | 81349       | RESISTOR, FIXED, COMPOSITION          |                   | EA                        | 1                               |



SECTION IV. NATIONAL STOCK NUMBER AND PART NUMBER INDEX

NOTE: LATEST THE END OF THE INDEX

| STOCK<br>NUMBER  | FIG.<br>NO. | ITEM<br>NO. | STOCK<br>NUMBER              | FIG.<br>NO. | ITEM<br>NO. |
|------------------|-------------|-------------|------------------------------|-------------|-------------|
| 5305-00-068-6529 | 4           | 32          | 5920-00-280-8342             | 3           | 18          |
| 5305-00-068-6533 | 4           | 34          | 5920-00-709-1149             | 3           | 19          |
| 5305-00-208-9861 | 3           | 26          | 5930-00-146-1300             | 4           | 16          |
| 5305-00-208-9861 | 4           | 12          | 5935-00-232-3758             | 4           | 4           |
| 5305-00-405-8960 | 4           | 10          | 5935-00-931-7490             | 3           | 20          |
| 5305-00-543-5763 | 1           | 9           | 5940-00-229-9644             | 3           | 31          |
| 5305-00-558-4889 | 4           | 31          | 5940-00-263-0243             | 3           | 30          |
| 5305-00-558-7361 | 1           | 4           | 5940-00-685-9022             | 3           | 1           |
| 5310-00-045-3299 | 1           | 3           | 5940-00-937-5237             | 3           | 16          |
| 5310-00-045-3299 | 4           | 40          | 5960-00-134-6073             | 4           | 7           |
| 5310-00-045-4007 | 3           | 28          | 5960-00-166-7661             | 4           | 5           |
| 5310-00-045-4007 | 4           | 18          | 5960-00-179-3710             | 4           | 9           |
| 5310-00-045-4007 | 4           | 25          | 5960-00-729-8150             | 4           | 6           |
| 5310-00-489-5009 | 3           | 6           | 5965-00-752-5764             | 4           | 29          |
| 5310-00-543-2410 | 4           | 15          | 6145-00-299-4417             | 3           | 22          |
| 5310-00-543-2410 | 4           | 37          | 6240-00-179-1814             | 4           | 33          |
| 5310-00-722-5284 | 4           | 14          |                              |             |             |
| 5310-00-722-5284 | 4           | 38          | LATEST NATIONAL STOCK NUMBER |             |             |
| 5310-00-809-8544 | 1           | 2           |                              |             |             |
| 5310-00-834-3156 | 3           | 27          | 5325-00-276-6089             | 2           | 5           |
| 5310-00-834-3156 | 4           | 19          | 5940-01-027-4667             | 4           | 27          |
| 5310-00-834-3156 | 4           | 24          | 5950-01-028-6664             | 4           | 1           |
| 5310-00-836-4476 | 4           | 39          | 5950-01-028-6693             | 4           | 11          |
| 5310-00-950-1310 | 4           | 30          | 5950-01-028-6694             | 3           | 29          |
| 5310-00-982-6796 | 4           | 26          | 6250-01-028-0351             | 4           | 36          |
| 5310-00-983-8483 | 1           | 8           |                              |             |             |
| 5325-00-174-5317 | 4           | 13          |                              |             |             |
| 5325-00-263-6632 | 4           | 2           |                              |             |             |
| 5325-00-291-9366 | 4           | 23          |                              |             |             |
| 5340-00-062-6115 | 1           | 7           |                              |             |             |
| 5340-00-257-0038 | 4           | 28          |                              |             |             |
| 5355-00-160-6058 | 1           | 11          |                              |             |             |
| 5355-00-584-5827 | 1           | 10          |                              |             |             |
| 5905-00-171-2002 | 3           | 4           |                              |             |             |
| 5905-00-171-2005 | 4           | 42          |                              |             |             |
| 5905-00-185-6920 | 3           | 10          |                              |             |             |
| 5905-00-185-6946 | 3           | 9           |                              |             |             |
| 5905-00-195-5514 | 4           | 21A         |                              |             |             |
| 5905-00-208-9861 | 3           | 26          |                              |             |             |
| 5905-00-254-7097 | 3           | 3           |                              |             |             |
| 5905-00-279-1866 | 3           | 11          |                              |             |             |
| 5905-00-549-7785 | 3           | 14          |                              |             |             |
| 5905-00-752-6702 | 4           | 41          |                              |             |             |
| 5905-00-752-6708 | 4           | 17          |                              |             |             |
| 5910-00-644-3573 | 3           | 15          |                              |             |             |
| 5910-00-783-8922 | 3           | 25          |                              |             |             |
| 5910-00-799-8289 | 3           | 12          |                              |             |             |
| 5910-00-799-8290 | 3           | 8           |                              |             |             |
| 5910-00-799-8291 | 3           | 7           |                              |             |             |
| 5910-00-822-8214 | 3           | 13          |                              |             |             |
| 5910-00-823-1019 | 4           | 3           |                              |             |             |

SECTION IV. NATIONAL STOCK NUMBER AND PART NUMBER INDEX (CONTINUED)

| PART NUMBER  | FSCM  | FIG. NO. | ITEM NO. | PART NUMBER   | FSCM  | FIG. NO. | ITEM NO. |
|--------------|-------|----------|----------|---------------|-------|----------|----------|
| AN931-4-7    | 88044 | 4        | 2        | SM-D-542946   | 80063 | 2        | 1        |
| AN931-6-10   | 88044 | 4        | 23       | SM-D-542947   | 80063 | 1        | 5        |
| AN931-9-10   | 88044 | 2        | 5        | SM-D-542947-1 | 80063 | 2        | 4        |
| CL632-2      | 46384 | 3        | 6        | SM-D-542947-2 | 80063 | 2        | 3        |
| CK60B470K    | 81349 | 3        | 13       | SM-D-542948   | 80063 | 4        | 22       |
| CP05A1KB104K | 81349 | 3        | 15       | SM-D-542949   | 80063 | 1        | 6        |
| CP05A1KE103K | 81349 | 3        | 8        | S8925         | 07109 | 4        | 29       |
| CP05A1KE563K | 81349 | 3        | 25       | TS102C01      | 81349 | 4        | 4        |
| CP05A1KE682K | 81349 | 3        | 12       | TS102U02      | 81349 | 4        | 8        |
| CP05A1KF562K | 81349 | 3        | 7        | TS102U03      | 81349 | 4        | 6        |
| E2           | 06915 | 4        | 28       | UP-221M       | 81349 | 3        | 20       |
| F02A250V1A   | 81349 | 3        | 18       | 1343          | 70485 | 1        | 7        |
| MP4          | 90201 | 4        | 20       | 1470SPEC      | 72512 | 1        | 10       |
| MS27183-4    | 96906 | 4        | 30       | 2100SPEC      | 72512 | 1        | 11       |
| MS27183-5    | 96906 | 1        | 8        | 342012        | 75915 | 3        | 19       |
| MS27183-6    | 96906 | 4        | 26       | 342012CAP     | 75915 | 3        | 17       |
| MS27183-7    | 96906 | 1        | 2        | 4-74-12       | 95263 | 4        | 36       |
| MS35223-13   | 96906 | 4        | 10       | 52A           | 71785 | 3        | 31       |
| MS35223-14   | 96906 | 4        | 31       | 55C           | 71785 | 3        | 1        |
| MS35223-27   | 96906 | 3        | 26       | 508           | 90925 | 3        | 2        |
| MS35223-27   | 96906 | 4        | 12       | 508           | 90925 | 4        | 21       |
| MS35223-28   | 96906 | 4        | 32       | 51854         | 43543 | 4        | 1        |
| MS35223-29   | 96906 | 4        | 34       | 58155         | 43543 | 3        | 29       |
| MS35223-31   | 96906 | 1        | 9        | 51856         | 43543 | 4        | 11       |
| MS35338-40   | 96906 | 4        | 15       | 6AU6WC        | 81349 | 4        | 9        |
| MS35338-40   | 96906 | 4        | 37       | 6P1           | 28520 | 3        | 23       |
| MS35338-41   | 96906 | 3        | 28       | 6X4WA         | 81349 | 4        | 5        |
| MS35338-41   | 96906 | 4        | 18       | 635-6         | 79963 | 3        | 30       |
| MS35338-41   | 96906 | 4        | 25       | 635-8         | 79963 | 4        | 27       |
| MS35338-42   | 96906 | 1        | 3        | 6005W         | 81349 | 4        | 7        |
| MS35338-42   | 96906 | 4        | 40       | 927-1707      | 72699 | 4        | 3        |
| MS35489-4    | 96906 | 4        | 13       |               |       |          |          |
| MS35649-42   | 96906 | 4        | 14       |               |       |          |          |
| MS35649-42   | 96906 | 4        | 38       |               |       |          |          |
| MS35649-62   | 96906 | 3        | 27       |               |       |          |          |
| MS35649-62   | 96906 | 4        | 19       |               |       |          |          |
| MS35649-62   | 96906 | 4        | 24       |               |       |          |          |
| MS35649-82   | 96906 | 4        | 39       |               |       |          |          |
| NE45         | 81349 | 4        | 33       |               |       |          |          |
| P703A183     | 04946 | 3        | 22       |               |       |          |          |
| RC20GF106K   | 81349 | 3        | 11       |               |       |          |          |
| RC20GF152K   | 81349 | 4        | 21A      |               |       |          |          |
| RC20GF155K   | 81349 | 3        | 10       |               |       |          |          |
| RC20GF470K   | 81349 | 3        | 4        |               |       |          |          |
| RC20GF471K   | 81349 | 4        | 42       |               |       |          |          |
| RC20GF474K   | 81349 | 3        | 9        |               |       |          |          |
| RD20GF823K   | 81349 | 3        | 3        |               |       |          |          |
| RC32GF271K   | 81349 | 3        | 14       |               |       |          |          |
| SC-DL-72389  | 80063 | 3        | 16       |               |       |          |          |
| SM-B-542258  | 80063 | 3        | 21       |               |       |          |          |
| SM-B-542562  | 80063 | 4        | 35       |               |       |          |          |
| SM-B-542570  | 80063 | 3        | 24       |               |       |          |          |
| SM-B-542574  | 80063 | 2        | 6        |               |       |          |          |
| SM-B-542772  | 80063 | 4        | 16       |               |       |          |          |
| SM-B-542773  | 80063 | 4        | 17       |               |       |          |          |
| SM-B-542774  | 80063 | 4        | 41       |               |       |          |          |
| SM-C-542753  | 80063 | 3        | 5        |               |       |          |          |
| SM-C-542754  | 80063 | 1        | 1        |               |       |          |          |
| SM-C-542757  | 80063 | 2        | 2        |               |       |          |          |

RECOMMENDED CHANGES TO EQUIPMENT TECHNICAL MANUALS



# SOMETHING WRONG WITH THIS MANUAL?

THEN... JOT DOWN THE DOPE ABOUT IT ON THIS FORM, CUT IT OUT, FOLD IT AND DROP IT IN THE MAIL!

FROM: (YOUR UNIT'S COMPLETE ADDRESS)

DATE

PUBLICATION NUMBER \_\_\_\_\_ DATE \_\_\_\_\_

| BE EXACT... PIN-POINT WHERE IT IS |             |            |           | IN THIS SPACE TELL WHAT IS WRONG AND WHAT SHOULD BE DONE ABOUT IT: |
|-----------------------------------|-------------|------------|-----------|--|
| PAGE NO.                          | PARA. GRAPH | FIGURE NO. | TABLE NO. |  |
|                                   |             |            |           |  |

CUT ALONG DOTTED LINE

TYPED NAME, GRADE OR TITLE, AND TELEPHONE NUMBER \_\_\_\_\_ SIGN HERE \_\_\_\_\_







FILL IN YOUR  
UNIT'S ADDRESS



FOLD BACK

DEPARTMENT OF THE ARMY

---

---

OFFICIAL BUSINESS

CUT ALONG DOTTED LINE

FOLD BACK



FILL IN YOUR  
UNIT'S ADDRESS

DEPARTMENT OF THE ARMY

\_\_\_\_\_  
\_\_\_\_\_

OFFICIAL BUSINESS

FOLD BACK

CUT ALONG DOTTED LINE

FOLD BACK



THEN... JOT DOWN THE DOPE ABOUT IT ON THIS FORM, CUT IT OUT, FOLD IT AND DROP IT IN THE MAIL!

# SOMETHING WRONG WITH THIS MANUAL?

FROM: (YOUR UNIT'S COMPLETE ADDRESS)

DATE

PUBLICATION NUMBER

DATE

BE EXACT. . . PIN-POINT WHERE IT IS

IN THIS SPACE TELL WHAT IS WRONG AND WHAT SHOULD BE DONE ABOUT IT:

| PAGE NO. | PARA-GRAPH | FIGURE NO. | TABLE NO. |
|----------|------------|------------|-----------|
|----------|------------|------------|-----------|

CUT ALONG DOTTED LINE

TYPED NAME, GRADE OR TITLE, AND TELEPHONE NUMBER

SIGN HERE:

FILL IN YOUR  
UNIT'S ADDRESS

DEPARTMENT OF THE ARMY

OFFICIAL BUSINESS

FOLD BACK

FOLD BACK

CUT ALONG DOTTED LINE

By Order of the Secretary of the Army:

BERNARD W. ROGERS  
General, United States Army  
Chief of Staff

Official:

PAUL T. SMITH  
Major General, United States Army  
The Adjutant General

DISTRIBUTION:

Active Army

|                              |                                 |
|------------------------------|---------------------------------|
| USASA (2)                    | USAERDAA (1)                    |
| COE (1)                      | USAERDAW (1)                    |
| TSG (1)                      | Sig FLDMS (1)                   |
| USAARENBD (1)                | Units org under fol TOE: -1 ea. |
| DARCOM (1)                   | 7                               |
| TECOM (2)                    | 9-47                            |
| USACC (4)                    | 11-15                           |
| TRADOC (2)                   | 11-16                           |
| OS Maj Comd (4)              | 11-36                           |
| MDW (1)                      | 11-37                           |
| Armies (2)                   | 11-36                           |
| Corps (2)                    | 11-85                           |
| Instl (2) except             | 11-86                           |
| Ft Gillem (10)               | 11-96                           |
| Ft Gordon (10)               | 11-97                           |
| Ft Huachuca (10)             | 11-98                           |
| Ft Carson (5)                | 11-117                          |
| SAAD (30)                    | 11-137                          |
| LBAD (14)                    | 11-302                          |
| TOAD (14)                    | 11-500(AA-AC)                   |
| SHAD (3)                     | 17                              |
| HISA (Ft Monmouth) (33)      | 29-134                          |
| Ft Richardson (ECOM Ofc) (2) | 29136                           |
| Svc Colleges (1)             | 37                              |
| USAICS (3)                   | 44-436                          |
| USAADS (2)                   | 44-436                          |
| USAFAS (2)                   | 44-437                          |
| USAARMS (2)                  | 44-535                          |
| USAIS (2)                    | 44-536                          |
| USAES (2)                    | 44-537                          |
| MAAG (1)                     | 44-546                          |
| USARMIS (1)                  |                                 |

ARNG — USAR: None

For explanation of abbreviations used, see AR 310-50.

